

## Key Investor Information

This document provides you with key investor information about this Sub-Fund. It is not marketing material. The information is required by law to help you understand the nature and the risks of investing in this Sub-Fund. You are advised to read it so you can make an informed decision about whether to invest.

### AMUNDI MSCI CHINA TECH ESG SCREENED UCITS ETF EUR A Sub-Fund of the SICAV AMUNDI INDEX SOLUTIONS

ISIN code: (A) LU1681043912

This UCITS has appointed Amundi Luxembourg SA, an entity part of Amundi group, as its Management Company

#### Objectives and Investment Policy

This Sub-Fund is passively managed.

The Sub-Fund is a financial product that promotes among other characteristics ESG characteristics pursuant to Article 8 of the Disclosure Regulation.

The objective of this Sub-Fund is to track the performance of MSCI China Tech IMI All Share Stock Connect ESG Filtered Index, and to minimize the tracking error between the net asset value of the Sub-Fund and the performance of the Index. The Sub-Fund aims to achieve a level of tracking error of the Sub-Fund and its index that will not normally exceed 1%.

The Index is a Net Total Return Index : dividends net of tax paid by the index constituents are included in the Index return.

MSCI China Tech IMI All Share Stock Connect ESG Filtered Index (the 'Index') aims to represent the performance of companies that are associated with the development of new products and services from technology innovations leading to breakthroughs in areas such as internet and digitization, mobility, autonomous technology, industrial automation and digital healthcare, while excluding those involved in certain controversial business activities or with relatively low MSCI ESG Controversies scores or MSCI ESG Ratings.

Information on how the Index is consistent with environmental, social and governance characteristics is available in the prospectus.

More information about the composition of the index and its operating rules are available in the prospectus and at: [msci.com](http://msci.com)

The Index value is available via Bloomberg (MXCTIAEF).

The exposure to the Index will be achieved through a Direct Replication, mainly by making direct investments in transferable securities and/or other eligible assets representing the Index constituents in a proportion extremely close to their proportion in the index.

The Investment Manager will be able to use derivatives in order to deal with inflows and outflows and also if it allows a better exposition to an Index constituent. In order to generate additional income to offset its costs, the Sub-Fund may also enter into securities lending operations.

The Sub-Fund integrates sustainability risks as outlined in more detail in section "Sustainable Investment" of the prospectus.

Dividend Policy : the accumulation share automatically retains, and re-invests, all attributable income within the Sub-Fund; thereby accumulating value in the price of the accumulation shares.

The minimum recommended holding term is 5 years.

The Sub-Fund's shares are listed and traded on one or more stock exchanges. In normal circumstances, you may deal in shares during the trading hours of the stock exchanges, provided that the Market Makers can maintain market liquidity. Only authorised participants (e.g. selected financial institutions) may deal in shares directly with the Sub-Fund on the primary market. Further details are provided in the prospectus of the UCITS.

#### Risk and Reward Profile



The risk level of this Sub-Fund mainly reflects the market risk arising from investments in emerging markets equities.

Historical data may not be a reliable indication for the future.

Risk category shown is not guaranteed and may shift over time.

The lowest category does not mean 'risk free'.

Your initial investment does not benefit from any guarantee or protection.

Important risks materially relevant to the Sub-Fund which are not adequately captured by the indicator:

- Liquidity risk: in case of low trading volume on financial markets, any buy or sell trade on these markets may lead to important market variations/fluctuations that may impact your portfolio valuation.
- Counterparty risk: represents the risk of default of a market participant to fulfil its contractual obligations vis-à-vis your portfolio.
- Operational risk: this is the risk of default or error within the different service providers involved in managing and valuing your portfolio.
- Emerging Markets risk : Some of the countries invested in may carry higher political, legal, economic and liquidity risks than investments in more developed countries.

The occurrence of any of these risks may have an impact on the net asset value of your portfolio.

## Charges

The charges you pay are used to pay the costs of running the Sub-Fund, including the costs of marketing and distributing it. These charges reduce the potential growth of your investment.

### One-off charges taken before or after you invest

<b>Entry charge*</b>	3.00%
<b>Exit charge*</b>	3.00%
<b>Conversion charge</b>	Not applicable
This is the maximum that might be taken out of your money before the proceeds of your investment are paid out.	
<b>Charges taken from the Sub-Fund over a year</b>	
<b>Ongoing charges</b>	0.55%
<b>Charges taken from the Sub-Fund under certain specific conditions</b>	
<b>Performance fee</b>	None

The **entry, exit and conversion charges** shown are maximum figures applied on the primary market only. In some cases you might pay less - you can find this out from your financial adviser.

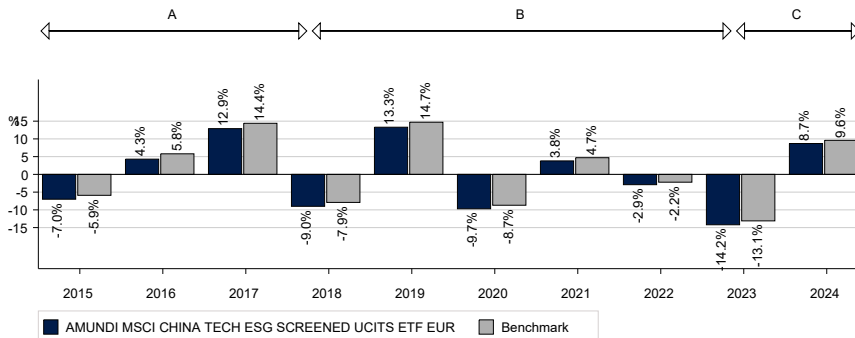
The **ongoing charges** figure is based on expenses for the current year. This figure may vary from year to year. It excludes:

- Performance fees
- Portfolio transaction costs, except in the case of an entry/exit charge paid by the Sub-Fund when buying or selling units in another collective investment undertaking.

\* Entry and exit charges will only apply when shares are subscribed or redeemed directly from the Sub-Fund, and will not apply when investors buy or sell such shares on stock exchanges. Investors dealing on exchange will pay fees charged by their intermediaries. Such charges can be obtained from intermediaries.

For more information about charges, please see charges paragraph of the prospectus of the UCITS, which is available at: [amundi.com](http://amundi.com) or [amundiief.com](http://amundiief.com).

## Past Performance



A : Based on the performance as from the launch date until the absorption date of the French Fund "AMUNDI ETF MSCI CHINA UCITS ETF" managed by Amundi Asset Management and absorbed by "AMUNDI MSCI CHINA" on 18/04/2018.

B : Performance of the Sub-Fund since its launch date.

C : \* Since the beginning of this period, the reference indicator of the Sub-Fund is MSCI China Tech IMI All Share Stock Connect ESG Filtered Index

The chart has a limited value as a guide to future performance. The annualised performances displayed in this diagram are calculated net of all charges taken by the Sub-Fund.

The Sub-Fund was launched on April 18, 2018. The Share Class was launched on April 18, 2018.

The reference currency is the Euro.

The reference Index is : MSCI China Tech IMI All Share Stock Connect ESG Filtered Index

## Practical Information

- Name of the depositary: CACEIS Bank, Luxembourg Branch.
- Further information about the UCITS (prospectus, periodical reports) can be obtained in English, free of charge, at the following address: Amundi Luxembourg, 5, Allée Scheffer, L-2520 Luxembourg.
- The details of the up-to-date remuneration policy, including, but not limited to, a description of how remuneration and benefits are calculated, the identity of persons responsible for awarding the remuneration and benefits are available by means of the following website: <https://www.amundi.lu/retail/Local-Content/Footer/Quick-Links/Regulatory-information/Amundi> and a paper copy will be made available free of charge upon request.
- Other practical information (e.g. latest net asset value, transparency policy and information about the asset composition of the Sub-Fund) can be obtained on the internet site [amundi.com](http://amundi.com) or [amundiief.com](http://amundiief.com).
- Indicative net asset value is published by the relevant stock exchanges.
- The UCITS contains a large number of other Sub-Funds and other classes which are described in the prospectus. Conversion into shares of another Sub-Fund of the UCITS may be made, subject to the conditions of the prospectus.
- Each Sub-Fund corresponds to a distinct part of the assets and liabilities of the UCITS. As a consequence, the assets of each Sub-Fund are exclusively available to satisfy the rights of investors in relation to that Sub-Fund and the right of creditors whose claims have arisen in connection with the creation, the operation or the liquidation of that Sub-Fund.
- This document describes a Sub-Fund of the UCITS. The prospectus and periodical reports are prepared for the entire UCITS named at the beginning of this document.
- The Luxembourg tax legislation applying to the UCITS may have an impact on the investor's personal tax position.
- Amundi Luxembourg SA may be held liable solely on the basis of any statement contained in this document that is misleading, inaccurate or inconsistent with the relevant parts of the prospectus for the UCITS.

This UCITS is authorised in Luxembourg and regulated by the Commission de Surveillance du Secteur Financier, Luxembourg ([www.cssf.lu](http://www.cssf.lu)).

Amundi Luxembourg SA is authorised in Luxembourg and regulated by the Commission de Surveillance du Secteur Financier, Luxembourg.

This key investor information is accurate as at February 11, 2025.